

MAKE MORE ART

THE STUDIO PLACE ARTS NEWSLETTER

spa 201 NORTH MAIN STREET, BARRE, VERMONT 05641 • 802.479.7069 • STUDIOPLACEARTS.COM

Spring/Summer 2011

A Personal Journey: Works by Susan M. Russell

Make More Art

Garden Design
Free Activities—
Youths
Solar Etching
Drawing
Ink Painting
Collage
Oil Painting
Encaustics
Ikebana
Mixed Media
Pastels
Paper Arts
Plein Air Arts
& More!

Classes for teens,
young artists,
seniors & all ages

Call to Artists, page 4
Class listings, pages 6–11

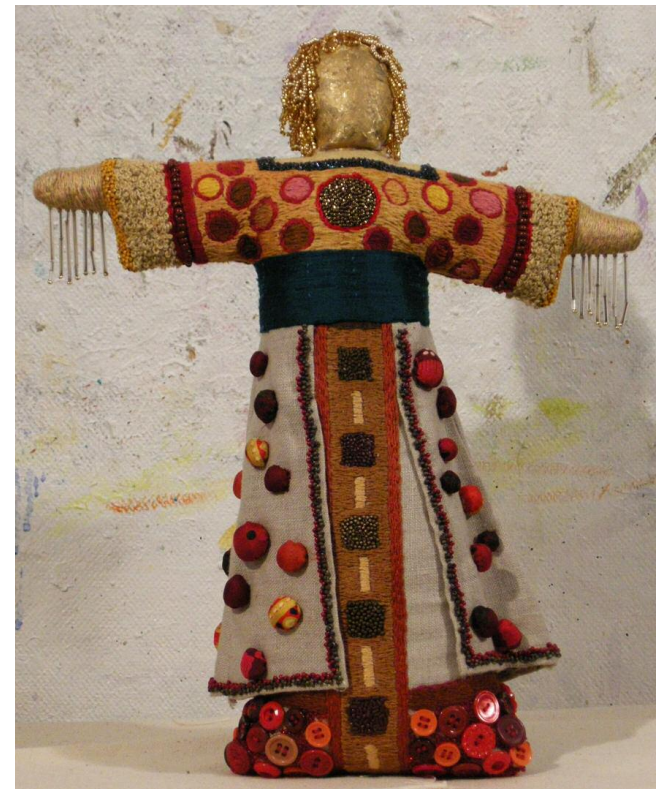
A retrospective exhibit of the late Susan M. Russell's work will be on display in the second and third floor galleries at Studio Place Arts (SPA) from April 26 to June 4. Susan was a long-time member of SPA, exhibiting artist, and art instructor, and her artwork was inspired by her dreams and inner journeys. The exhibit will include earth-hued oil paintings and mixed media works, intricately embroidered and beaded pieces, and dolls bejeweled with richly toned threads and buttons.

Susan was an enthusiastic cheerleader for SPA from its early days, and would often call or visit to provide support and insights into improving programs and expanding fundraising efforts. It was a delight to hear her bright voice on the other end of the telephone line, excitedly announcing, "I've got an idea!" Her final piece of encouragement came in the form of a bumper sticker that declared, "Art Saves Lives."

Susan spotted art everywhere. She was an early, keen advocate for re-use and explored every avenue for obtaining recycled goods for use in artwork (and for her re-use business). Her artistic journey found voice in workshops that gave participants tools for spiritual exploration through making mandalas. Susan's mixed media works were embellished with threads, tiny beads, and buttons that may have once adorned

someone's frock. Her work connected past to present and looked forward via several distinct series: Transportals, Aerial View, Earth's Carpet, and Arches.

continued on page 14



Richly textured doll created by the late Susan M. Russell.

Upcoming Events at SPA

APRIL 26 – JUNE 4, 2011

Main Floor Gallery: **Refuge**

Second & Third Floor Galleries:

The Art of Susan M. Russell — A Retrospective

SPECIAL EVENTS

Friday, April 29, 5:30–7:30 PM

Opening Reception for new shows at SPA

Saturday, June 4, 2:30–4 PM

Closing Reception for The Art of Susan M. Russell

SPECIAL EXHIBIT: May 10–25, 2011

Four Seasons Mural Project: Planting the Seeds for Change

Student Work on Exhibit in the SPA Classroom

Wednesday, May 18. 3–5 PM

Public Reception for the Four Seasons Mural Project

JUNE 14 – JULY 30, 2011

Main Floor Gallery: **Lost in Traffic**

Second Floor Gallery: **Postcards & Memories**

Third Floor Gallery: **Ode to Demeter, Persephone Entre –**

A linoleum block print exhibit by Sam Kerson

SPECIAL EVENTS:

Friday, June 17, 6–8 PM

Opening Reception for new shows at SPA

AUGUST 16 – SEPTEMBER 24

Main Floor Gallery: **Uncommon Threads**

Second Floor Gallery: **Photographs by Krista Cheney**

Third Floor Gallery: **Works by Nikki Gardner**

SPECIAL EVENTS:

Friday, August 19, 6–8 PM

Opening Reception for new shows at SPA



*Dan Moran stands with 2 of his drawings exhibited in The Dark Side, January-Feb, 2011.
Credit: Jack Rowell*

Letter from the Executive Director

Dear Friends,

It's not an extra. You probably have heard that the arts are simply an extra. This unremarkable statement usually is uttered when purse strings become tightened in our schools and local cultural organizations.

It's not an extra.

Many research initiatives have demonstrated that art matters deeply in the development of children and youths. These studies show how the arts are an essential additive in the development of students, including both academic (e.g., reading, mathematics and language skills) and social performance measures. Dr. James Catterall reported that access to arts activities and education in the student's early years contributes strongly to higher academic performance in later school years. He found that access to art activities and education led to increased test scores, greater community participation, lower drop-out rates, and higher self-esteem.

Nevertheless, according to a report issued by the National Assembly of State Arts Agencies, "Despite convincing research and strong public support, the arts remain on the margins of education, often the last to be added and the first to be dropped in times of strained budgets and shifting priorities."

Instructors, staff members, resident artists, and others associated with SPA have seen the excitement and transformation of many children and youths who visit our art center. We are concerned that funding for arts programs continues to shrink around the region.

The arts are essential.

Sincerely,
Sue Higby

Thank You,
Times Argus
for printing our newsletter

SPA Splashes

Celebrate Local Food & Art

You're invited! There will be a special art exhibit about the Four Seasons Mural Project: Planting the Seeds of Change in the SPA Classroom from May 10 to May 25, with a public reception on Wednesday, May 18 from 3–5 PM. The exhibit will share students' work leading up to the mock-up design of a mural that explores topics of importance to the students. Project coordinator Sandra Lory used the cycles of nature and hands-on knowledge of local medicinal plants and foods as a spring-board for students to learn from, reflect on life, and make art.

Artworks for Everybody!

Congratulations to Jim Lund for another wonderful art exhibit at the Vermont State House in April to raise awareness about the importance of arts programs for community members with disabilities. For the fourth year at SPA, Jim organized weekly art workshops on Thursday afternoons from September through the end of March for disabled teens and adults in our area. At the conclusion of their creative, 7-month program, Jim assembled a multimedia art exhibit that he aptly named, "Artworks for Everybody," for the public to enjoy.

Lost in Traffic?

Just think of it as an adventure that may inspire some art. This year, a major road reconstruction project will begin in Barre City. There will be a few, occasionally annoying issues—like extra traffic and a few delays. During the warm weather months, we'll be hosting our Opening Receptions at later hours to avoid traffic, starting them at 6 PM. If there are especially difficult situations, we'll post notices at SPA's website and in email alerts. (For additional advisories, visit [wedigbarre.com]) We'll be paying homage to the situation with a major exhibit called "Lost in Traffic" in July (see page 4 for more information).

Call to Artists

SPA has a group of exciting shows planned for the summer-fall seasons and exhibition opportunities for 2012. Please share this information with others who may be interested. We look forward to hearing from you!

Lost in Traffic

Ever been lost, truly lost in traffic? We're planning a major exhibit as a tribute to these uncertain moments—and just in time to coincide with Barre's Main Street Reconstruction Project. Think vehicles, maps, barriers, detours, mazes, signs, SOS, confusion and perhaps some chaos. During the exhibit this coming summer, you'll be re-routed around the block in order to reach the SPA building. "Lost in Traffic" will be in the Main Floor Gallery. (For travel advisories during the summer construction schedule, go to [wedigbarre.com])

Application Deadline: *May 6, 2011*

Exhibit Dates: *June 14–July 30, 2011*

Postcards & Memories

We think that you've got a shoebox filled with postcards, photographs, ticket stubs, pebbles, and souvenirs from Stuckey's. Now is an ideal time to dive into your boxes and scrapbooks, and create something that commemorates your earlier life adventures—perhaps this will push you to some new adventures this year! This show will include collages and assemblages primarily. "Postcards & Memories" will be in the Second Floor Gallery.

Application Deadline: *May 6, 2011*

Exhibit Dates: *June 14–July 30, 2011*

Uncommon Threads

This group, multi-media exhibit invites proposals for works that push the boundaries for needlework, including: knitting, needle point, crochet, tatting, and hooking. The exhibit will include works that use traditional needlework in an untraditional way and with alternative media. In addition, the exhibit will feature nonfunctional works, such as sculptures and hanging works, as well as original wearable items that take color, texture and design beyond the ordinary.

Application Deadline: *June 30, 2011*

Exhibit Dates: *August 16–September 24, 2011*

Rock Solid

This outstanding annual show showcases stone sculptures and assemblages by area artisans. While the emphasis is sculptural works, the show includes a small number of paintings and other works that depict the beautiful qualities of stone.

Application Deadline: *August 19, 2011*

Exhibit Dates: *October 4–November 5, 2011*

Inviting Proposals for 2012

SPA uses its second and third floor space for solo and small group shows. We encourage artists to submit a proposal to SPA for consideration of such a show. Please send SPA: A brief written statement about yourself or the artist group and what you want to accomplish with a show, a CD or DVD with 8-12 images of representative work (please label this information carefully with the name, media, size, price and date of your work). In addition, we encourage you to visit SPA to see the space and to consider how you would use the space.

Deadline for Proposals: *June 24, 2011*

Submitting artwork to SPA

Applications should include:

- Artist name and contact information
- Description of proposed work (dimensions, materials, date, retail price [65% to artist])
- Images (send digital images via email to info@studioplacearts.com Please use jpeg format and limit file size to less than 3MB total, slides, copies of drawings, prints, other relevant materials) of work. Please include a written summary of this information **and** label the images/slides for ease of review. Include dimensions, material, date & retail price.
- SASE for return of materials
- \$10 application fee (waived for SPA members)

Mail to: **Studio Place Arts**
201 North Main St., Barre, VT 05641

Thank You for Your Support!

The BASH (Big Arty SPA Happening), our annual fundraiser for SPA Programs, on March 11 was a blast. We are grateful for the support that SPA received from local businesses, community members and organizations. Thank you very much!

Major Support Provided by

National Life Group
Northfield Savings Bank
Washington Electric Co-op

Artists

John Brickels
Pria Cambio
Nancy Dwyer
Alan Frascoia
Wendy James
Chris Jeffrey
George Kurjanowicz
Robin LaHue
Georgia Landau
Linda Maney
Old Peckum Farm Collaborative
Elizabeth Roman
Jack Rowell
michael smith
Axel Stohlberg
Missy Storrow

Businesses

Adams Granite Co.
Ben & Jerry's
Black River Design
Butterfly Bakery
Cabot Creamery Co-operative
Capital Plaza Theatre
Green Mountain Coffee Roasters
Hannaford's
Hen of the Wood
Hilltop Restaurant
Hunger Mt. Co-op

Jan Smith Massage
Julio's Cantina
Lake Champlain Chocolates
Pepsi Bottling Ventures
Random Rescue
Sarducci's
Sewing Basket
Tiffany MacLaren Massage
Rock of Ages

Individuals

Pria Cambio
Cynthia Catto
Juliana Fechter
Darryl & Sara Garland
Jenn Ingersol & Andy Wellman
Dashka Kurjanowicz
Bev Lord
Kathy Moulton
Heather Ritchie
Kristin Schuyler
Marge Sichel
Lori Stroutsos
Mark Waskow

Organizations/State

Barre Opera House
Community College of Vermont
Green Mountain Film Festival
Flynn Center for the Performing Arts
LACE
David Schutz, VT State House
Vermont State Parks
Vermont Technical College
VIT Worldwide Video



Our BASH featured the Mellow Yellow Band downstairs (top photo) and Irish instrumentals by Benedict Koeher and Hilari Farrington (upstairs). Farrington is pictured (lower photo). Credit: Jack Rowell



Spring/Summer 2011 Classes & Workshops

Adult (ages 16+)

In-Depth Studies in Perspective Janice Walrafen

4 Tuesdays: May 3, 10, 17 & 24
5:30–7:30 PM

This is an ideal class to take your basic drawing skills to the next level. In the first 2 classes, students will learn and practice the tricks of one- and two-point perspective and foreshortening. During the next 2 classes, students will take the lessons outdoors and draw streetscapes, buildings, and other aspects of the manmade environment. The class is helpful for professionals and workers who want to improve their ability to communicate plans with clients via drawings or sketches. Bring a 9"x12" sketchpad, a ruler, and two HB pencils.

Members \$80/Non-Members \$90

Janice Walrafen has been teaching and creating art and community puppet pageantry for more than 20 years in central Vermont.

Life Drawing Marie LaPre Grabon

3 Fridays: May 6, 13 & 20 12:30–4 PM

Working from the nude model, students will focus on proportion, foreshortening, composition and technique. Students will have the opportunity to create personal and expressive artistic statements about the human form. This course will include both the technical constructs used in rendering of the figure, such as proportion or form, and those methods that give a drawing its strength and beauty, such as gesture, weight, or sense of the aesthetic anatomy. Much of the work will be in skill based short exercises, including some to do at

home. Bring charcoal, an eraser and a chamois cloth, or buy supplies from the instructor at the workshop for a small fee. Some drawing experience is required.

Members \$130/Non-Members \$150 (includes model fee)

For the past 28 years Marie has been exhibiting her work in Vermont, New Hampshire, Massachusetts and Rhode Island. She has had numerous individual exhibitions, the latest to be held at Catamount Arts in St. Johnsbury. Marie has received many awards from a variety of organizations including the Stratton Art Festival, the Helen Day Art Center, the Vermont Studio Center, the AVA Gallery and the Vermont Arts Council. Marie received her undergraduate degree from Massachusetts College of Art in Boston, MA, and a graduate degree in drawing and painting from Goddard College in Plainfield, VT. She continues to maintain her studio in her home in Hardwick, Vermont, where she is currently producing mixed media works of art.

Prospect and Refuge: Space and Inspiration in the Garden Jean Vissering

Thursday, May 12 7–8:30 PM

Prospect-Refuge Theory explains how our primitive human origins led to some universal aesthetic landscape preferences. We will explore how these concepts can be translated into the design of comfortable and delightful garden spaces. (Enjoy the exhibit, "Refuge" in the SPA Main Gallery before or after Jean's talk.)

\$8 per participant

Jean Vissering is owner and principal of Jean Vissering Landscape Architecture, a consulting firm specializing in landscape planning and design, visual impact assessment, and visual resource planning. She has designed many residential and community landscapes throughout the region. Recent public projects include the Courage in Bloom Garden honoring victims of violent crimes on Baldwin Street in Montpelier, City Hall Plaza renovations, and Martin Bridge Park in Marshfield. She has taught numerous classes in landscape design including courses at the University of Vermont between 1982 and 1997. She has a life-long fascination with human perceptions of landscape and landscape aesthetics.

Summer Sunsets, Hillside & Flowers: A Watercolor Class for Beginners

Kathrena Ravenhorst-Adams
3 Saturdays: May 14 & 21, June 18
9:30 AM–NOON

Students will learn the basics about painting with watercolors and strengthen their beginning skills with a series of demonstrations, paint-along activities, and hands-on lessons. This workshop is intended to introduce students to the uses of the media and to provide confidence-building activities so that they may move on to intermediate-level watercolor painting classes. Flowers and natural objects from the early garden will be an emphasis in this workshop (if you wish, bring something to serve as your inspiration). Kathy will provide suggestions for home practice between the May and



Angela paints a colorful landscape in a recent workshop on watercolor painting at SPA. Credit: SPA

June class sessions. Contact SPA for a suggested materials list; Kathy will have beginners kits available if needed.

Members \$70/Non-Members \$80

Kathrena Ravenhorst-Adams' special love is the expression of nature through art. She taught watercolor and nature journaling at the Massachusetts Audubon Society's Broadmoor Wildlife Sanctuary before moving to Vermont. A long-time member of the Paletteers, she has been painting, teaching, and showing her work here for over 20 years.

Know When to Fold 'Em

Elissa Campbell

Thursday, May 19, Monday, May 23 &
Thursday, May 26 4:30–7:30 PM

The accordion book is a deceptively simple book structure. While the basic folded form is easy and quick to produce, it can be adapted into more complex and creative books. In this workshop, participants will create several books based on the accordion structure—the basic accordion, panel book, the flexagon, and the flag book. In addition, the structures will incorporate artist trading cards that will be created during the workshop.

Participants are encouraged to bring materials/tools for both decorating the book covers and creating the artist trading cards. Additional materials will be available for use during the class. In this two-day workshop, each participant will leave class with four completed books and a basic knowledge of bookbinding technique. You will receive a detailed handout and resource list for all materials we use. No previous experience required—this is a great class for a beginner. Materials fee to the instructor: \$10
Supplies: Awl, bonefolder, ruler, X-Acto knife or utility knife, cutting mat, scissors, pencil, glue brush, glue stick. Note: Bring the supplies if you have them—don't feel obligated to buy anything. Elissa will have extras available.

Optional materials/tools: Collage materials (small bits of handmade paper, fabric, fibers, etc.), photos, rubber stamps and pads, markers, pens, colored pencils, and decorative scissors. Note: These materials will be used for creating content for your books.

Members \$80/Non-Members \$90

Elissa Campbell has been making books the past 16 years and sells her work professionally under the business name of Blue Roof Designs. She is a big believer in the power of using books for self-expression. Elissa is currently serving on the board of the Book Arts Guild of Vermont and is Chair of the Standards Group for the Vermont State Craft Center Overview Commission.

<http://www.bluroofdesigns.com> &

<http://www.facebook.com/bluroofdesigns>

Whole Body Ink Painting

One-Day Intensive

Glen Hutcheson

Tuesday, May 24

9:30AM–4:30 PM (½ hr break for lunch)

Making expressive, dynamic ink paintings (or any artwork) has a lot to do with attitude. This one-day intensive class will focus on brushwork, tonal modulation and dramatic expression in large-scale work, giving even the greenest hand the confidence to paint powerfully. To show us what we can strive for, we'll start with some images of work by ancient and contemporary masters of style. The bulk of our time will be spent with brush in hand, and we'll aim to make several complete paintings each over the course of the day. Along the way we'll cover basic visual measurement, some psychological and physical tricks of painting, and the beginnings of observational techniques, all building on the gestural skills at the heart of the class. Materials fee: \$20 to SPA by May 20.

Members \$60/Non-Members \$70

Glen Coburn Hutcheson is a Montpelier-based artist and teacher working in drawing, painting and sculpture. He studied at the New York Studio School (MFA

Sculpture 2009) and Haverford College (BA Painting 2001). For more information, and to see his work, visit: www.gchfineart.com

Exploring Mixed-Media

Pria Cambio

2 Wednesdays: June 1 & 15 1:30–3:30 PM

Come and experiment with your favorite media—watercolor, acrylics and collage—in an unstructured setting with helpful coaching offered by Pria. Jump-start your creativity with this enjoyable exploration of a variety of media, test new approaches, and discover your own style. Participants who want to learn something new will receive individual assistance.

Members \$40/Non-Members \$50

Pria Cambio has been an art instructor for more than 30 years, including instruction in the public schools of Glastonbury, Connecticut; the head of the Art Department at Community College of Hartford, Connecticut; and at various educational and art institutions in central Vermont

Introduction to Ikebana

Michiko Oishi

Thursday, June 2 4:30–7 PM

Michiko will discuss and demonstrate Ikebana, the Japanese art form of floral arrangement. She will teach about the basic concepts, such as shape, line and form, materials, preparation of materials, and rules of Ikebana. Students should bring: small selection of flowers, selection of small, distinctive branches, a shallow bowl, frog (needle pin metal flower frog), and scissors. After Michiko completes her discussion and demonstrations, students may work on their own arrangements to take home.

Members \$20/Non-Members \$30

Michiko Oishi was born and raised in Tokyo, Japan. She is a certified Ikebana instructor of the Sogetsu School. She enjoys sharing Japanese culture with people in Vermont.

Letter Carving in Stone

Kerry O. Furlani

Friday, June 3

10AM–4PM (with ½ hr break for lunch)

This one-day workshop introduces students to the ancient Roman techniques of “V-incised” letter forms using hand chisels and mallets. Students will be guided through the drawing and designing of their letter forms. No previous experience with drawing or carving necessary. The class will be individually tailored to each student’s needs. A simple project of completing a name, monogram, or house number would be the goal for the day. Please bring your own safety glasses. Materials fee for tool rental and slate: \$20. Class size limited to six.

Members \$50/Non-Members \$60

Kerry O. Furlani recently returned from a three-month intensive study in Wales with a master letter carver named John Neilson. Kerry is a 1998 graduate of the Fink School of Figurative Sculpture in Stoke-on-Trent, England [www.kerryofurlani.com]. When she returned to the U.S. in 2001, she worked for The Carving Studio and Sculpture Center in West Rutland, Vermont, located in the heart of America’s early 20th-century marble industry.

Plein Air Oil Painting

David Smith

4 Sundays: June 5 & 26, July 17 & Aug. 7

(Save rain date: Sun., August 14)

1:30–5:30 PM

Join accomplished painter David on the hillsides of beautiful central Vermont for plein air oil painting. These four sessions are aimed at intermediate to advanced painters, and they will take place every third week throughout the summer. This provides time for painters to explore subjects and return for critique and coaching. The sessions will help participants develop ways of capturing light, color and mass in a rapid manner. Please provide SPA with your email

address; meeting spots will be sent to you earlier in the week. (NOTE: If it is raining on a scheduled session, you will receive an email by noon on Sunday letting you know that the session is postponed to August 14.)

Members \$145/Non-Members \$165

David Smith is an oil painter who has exhibited extensively in New England for more than 30 years. His work is in collections throughout the United States and Europe. For images and information, visit [www.davidsmithoilpainting.com]

Encaustics: Going Deep

Elizabeth Kendrick

One-Day Intensive

Wednesday, June 8 9:30 AM–12:30 PM

Learn layering with multi-media techniques in encaustic: collage, image transfer, stenciling and a multitude of other possibilities.

The morning session will introduce a smorgasbord of image making opportunities. The afternoon will allow for open work time and assistance with the materials.

Materials fee will include two 5"x7" luan panels, encaustic wax medium and paint, oil paints, and use of tools. Bring carbon, toner based copies of your favorite images, interesting papers (thin Japanese papers work particularly well), craft store rub-ons, fabric, thread, buttons, old watercolor paintings, or a collection of smallish objects to include in your paintings. You are welcome to bring additional panels.

Materials fee: \$25. (Materials are ordered in advance; fee is due by May 23.)

Members \$30/Non-Members \$40

Studio Session

Wednesday, June 8 1:30–4PM

Enjoy a flexible studio work session using encaustics with Beth during the afternoon. Participants should have taken an introductory workshop on encaustics.

Materials fee: \$25. (Materials are ordered in advance; fee is due by May 23.)

Members \$25/Non-Members \$35

Elizabeth Kendrick is a multi-media painter, muralist and an award winning artist and educator who has exhibited her work both locally and regionally. Working on encaustics fuses her love of layering paint with her passion for cut paper and collage. She lives and works in Waitsfield.

How Smooth are You?

Elizabeth Kendrick

One-Day Intensive

Thursday, June 9 9:30 AM–12:30 PM

In this workshop, we will cover encaustic techniques that achieve a variety of textures. From smooth to groovy to high grit. The morning will introduce participants to the techniques, the afternoon will allow for open work time and assistance with the materials.

Materials fee to include two 5"x7" luan panels, encaustic wax medium and paint, oil paints, and use of tools. You are encouraged to bring additional panels, interesting papers or fabrics, your favorite stencils or scribing tools. Materials fee: \$25. (Materials are ordered in advance; fee is due by May 23.)

Members \$30/Non-Members \$40

Studio Session

Thursday, June 9 1:30–4PM

Enjoy a flexible studio work session using encaustics with Beth during the afternoon. Participants should have taken an introductory workshop on encaustics.

Materials fee: \$25. (Materials are ordered in advance; fee is due by May 23.)

Members \$25/Non-Members \$35

See above for information about Elizabeth Kendrick.

Unlocking the Secrets of Color

Jane Davies

Friday, June 10

9:30AM– 4PM (with ½ hr lunch break)

Color is one of the most immediate and emotionally affecting elements in visual art, packed with symbolic and cultural associations, personal meaning, and expressive potential. Your choice of colors can make or break a collage, painting, or mixed media piece; even a small change in color can be the key to transforming an otherwise so-so piece into a stunning work of art. In this workshop we will explore color through hands on exercises, learning how to mix them, and how they interact and relate to one another, and how they work in composition. After taking this workshop you will be on your way to making confident color choices and developing your personal color style.

Members \$85/Non-Members \$95

(NOTE: If you take Jane's workshops on June 10 AND June 17, there is a special price of Members: \$155/Non-Members\$175)

From potter, pottery painter/craftsperson, to collage artist, designer, and teacher, Jane Davies is about using color with passion and panache. Davies, who studied ceramics at Bennington College in Vermont and the School for American Crafts in Rochester, New York, before opening her own studio in 1991, made her living selling her ceramics at craft shows and galleries. She gradually transitioned into designing tableware, quilting fabric, paper goods, stationery, and other projects for a myriad of prestigious manufacturers. In addition, she has written 3 books: *A Glaze of Color: Creating Color and Design on Ceramics*, 2004; *Collage with Color: Create Unique Collages in Vibrant Color*, 2005; and *Collage Journeys: a Practical Guide to Creating Personal Artwork*, 2008.

Know When to Fold MORE of 'Em

One-Day Intensive

Elissa Campbell

Monday, June 13

9 AM–4:30 PM

The accordion book is a deceptively simple book structure. While the basic folded form is easy and quick to produce, it can be adapted into more complex and creative books. In this “sequel” to the Know When to Fold 'Em workshop, participants will create several books based on the accordion structure—the nested accordion, the star book, and the tunnel book. Participants are encouraged to bring materials/tools for both decorating the book covers and pages. Additional materials will be available for use during the class. In this intensive, one-day workshop, each participant will leave class with three completed books and a basic knowledge of bookbinding technique. You will receive a detailed handout and resource list for all materials we use. No previous experience required (and you don't need to take the first class in the series)—

this is a great class for a beginner. Materials fee

to the instructor: \$10.00

Supplies: Awl, bonefolder, ruler, X-Acto knife or utility knife, cutting mat, scissors, pencil, glue brush, glue stick. Note: Bring the supplies if you have them—don't feel obligated to buy anything. Elissa will have extras available.

Optional materials/tools: Collage materials (small bits of handmade paper, fabric, fibers, etc.), photos, rubber stamps and pads, markers, pens, colored pencils, and decorative scissors. Note: These materials will be used for creating content for your books.

Members \$65/Non-Members \$75

See page 7 for information about Elissa Campbell.

Plein Air Pastels

Joy Huckins-Noss

3 Tuesdays: June 14, 21 & 28

1–4 PM

June is a great time to get outside and paint the beautiful scenery of Vermont! The class will meet at three different locations in the Central Vermont area, TBA. Joy will provide demonstrations and group instruction, as well as individual help and feedback. Students will be informed about the materials and techniques of pastel as well as composition, color and perspective in the landscape. In case of rain, the class will be held at the SPA classroom and students should bring photos from which to work.

Members \$80/Non-Members \$90

Joy is a contemporary oil/pastel artist who has exhibited extensively in the New England area. Recently she was accepted into the Richeson75 Landscape competition in Kimberly, Wisconsin and is featured in the “Best of Artist's International Landscape” competition publication. Her work can be seen in her upcoming solo show at the Vermont Supreme Court, Montpelier, in November 2011, also at the Artisan's Gallery in Waitsfield, VT and Gallery Wright in Wilmington, VT. Her work can be seen at www.joyhuckinsnoss.com



Cynthia Ross stands beside her paintings, “In the Realm of the Unconscious 1 & 2,” exhibited in The Dark Side.t

The Elements of Dynamic Composition

Jane Davies

Friday, June 17

9:30AM–4PM (With ½ hr lunch break)

Composition means the arrangements of elements and their relationships to one another within the frame of your painting or collage (or any art form). You can have all the drawing or painting skill in the world, great subject matter and a fantastic sense of color, but a piece lacking in compositional integrity falls short of its full potential. In this one-day intensive we will explore the elements of composition, such as shape, line, color, symmetry, repetition, focal point, etc., and identify them in the many examples of collage and painting that Jane will bring. Then we will do some fun compositional exercises in paint, collage, and sketching to discover how we can understand these elements in our own work.

Please bring examples of your own work if you like. They can be works in progress, pieces that did or did not work compositionally, or just pieces in which you would like to explore composition a little more thoroughly.

Members \$85/Non-Members \$95

(NOTE: If you take Jane's workshops on June 10 AND June 17, there is a special price of Members: \$155/Non-Members \$175)

See page 9 for information about Jane Davies.

Get Inspired with Watercolors A Workshop for Seniors (Ages 60+)

Pria Cambio

Wednesday, June 22 1:30–3:30 PM

It's easy, It's relaxing. It's a huge pleasure to learn the basics of painting with watercolors with Pria. Join us for a stress-free, delightfully paced workshop intended for

beginners. Bring your own watercolors to become more familiar with their use or kit sets will be available at the workshop. Bring a friend for extra fun.

\$10 each participant

See page 7 for information about Pria Cambio.

Solar Etching LynaLou Nordstrom

Friday, June 24

1–4 PM

Saturday, June 25

Noon–4PM

Solarplate is a thin steel printing plate coated with a photo sensitive emulsion used for intaglio or relief prints. Images are created on the plate by exposure to UV light and processed with water eliminating the need for acid. The light source can be the sun or a special light box. Both delicate and bold images can be produced. Plates are then inked like etching or relief blocks. Many prints can be pulled from one plate. One can work directly on the plate with black etching ink or use transparencies to make the images on the plates. This is a very exciting process to add to a printmaker's "bag of tricks" because it is non-toxic. Inks, two plates and paper will be provided. Extra plates will be available for purchase. Artists will fall in love with this technique! Materials fee to the instructor: \$22.

Members \$65/Non-Members \$75

Lyna Lou Nordstrom began printmaking in 1995. Her previous incarnation was "fabric artist." Her colorful monotypes have won awards in juried shows throughout New England and Canada. In 2006 she received a month long Residency Fellowship at the Vermont Studio Center. She has taught classes at the high school and adult level for years and is on the Vermont Arts Council's juried artist roster.

Open Printmaking Studio

LynaLou Nordstrom

Sunday, June 26

Noon–4PM

SPA will offer a 4-hour Open Printmaking Studio opportunity with an experienced printmaker. The Open Printmaking Studio is available to all printmakers who have participated in previous workshops using the SPA Whelan XPRESS. Lyna Lou will assist printmakers with a variety of printmaking applications, and will facilitate a friendly and cooperative printmaking environment. Some materials will be available for a small fee, based on use.

NOTE: Space is limited (maximum capacity is 5). Please reserve your place by June 20.

Members \$20/Non-Members \$30



Lyna Lou inks her collagraph plate.

Credit: LynaLou Nordstrom

Nature Prints

LynaLou Nordstrom

Monday, June 27 11:30 AM–4:30PM

Using the bounty of spring or summer's new growth, we will create prints from the impressions of the grasses and leaves.

Kitakata, a paper similar to rice paper, and Akua Intaglio nontoxic printing inks will allow participants to develop rich colors on the semi transparent paper. The pressure of the press picks up every detail and the plants also retain some of the ink from going through the press, so the layering possibilities and ghost images are endless. Using lace or other textures can add more variety.

Seasoned printmakers or beginners welcome. Prints can be framed or made into a small book. Materials fee to the instructor: \$10.

Members \$45/Non-Members \$55

See page 10 for information about LynaLou Nordstrom.

Studying the Watercolors of John Singer Sargent

Phyllis Greenway

Friday, July 8

9:30 AM–3:30 PM (½ hr break for lunch)

This workshop will combine lecture, discussion, and demonstration of John Singer Sargent's brush work. His composition, brushwork, and color theory will be discussed. Students will work to duplicate portions of this famous artist's finest watercolor paintings, learning concepts and technique in the process. Contact SPA for a suggested supply list.

Members \$50/Non-Members \$60

Phyllis Greenway: [www.phyllisgreenway.com] Recently moved to Northfield. Phyllis has been teaching by this method for more than 25 years in Virginia. BA in Fine Arts, Saint Mary College, postgraduate studies: University of Kansas, Painting and Drawing, continuation of study in workshop format with nationally known artists. Teacher in 3 Fine Art Centers, Newport News, Hampton, Matthews, VA. Workshops ad series of classes given in Drawing, Painting, Multimedia in those areas, as well as a Juror and lecturer in VA.

Summer Sizzler Watercolor Class

Kathrena Ravenhorst-Adams

2 Tuesdays & 2 Thursdays:

July 12, 14, 19 & 21 1:30–4:30 PM

This is an intensive watercolor class for beginner and intermediate level students (some experience is best). It is a four-part class, which meets on two Tuesday and two Thursday afternoons, and includes instruction, demonstration and practice. Homework will be expected of those who have time—preferably done outdoors in your garden or on a favorite hillside vista. Sessions will focus on Vermont landscapes, flowers and other subjects that students wish to examine. The more you paint, the more you will learn! Bring your own supplies (call SPA for a suggested supply list). Beginner sets are available for the first class.

Members \$110/Non-Members \$130

See page 6 for information about Kathy Adams.

Experiment with Acrylics

Phil Whitman

3 Wednesdays: July 13, 20 & 27

6–8:00 PM

Acrylic paints (and more specifically, acrylic painting mediums), present an extremely versatile approach for artists. In this workshop, we will explore a range of acrylic painting mediums, from pastes to gels to glazing mediums. These mediums can be used singly or in combination to achieve a variety of dramatic or subtle surface effects. We will also focus on specific paint-mixing techniques that work well with acrylic paints. After sampling these possibilities, we will work on paintings of the participants' individual interests, employing some of these techniques. Participants should bring: brushes and palette knives, small panels, sandpaper,

spray bottles, a variety of plastic jars with lids (for paint mixing and storage).

Materials fee to SPA (send by July 6): \$10

Members \$60/Non-Members \$70

Phil Whitman was born and raised in the foothills of the Adirondack Mountains. After graduating from Bowdoin College with a double major in History and Visual Arts, he went on to receive an MFA in Painting from the Rhode Island School of Design. His work, which includes paintings, drawings, and small-scale figures and dioramas, has been shown in New York and New England. He has been awarded several residencies, including The Milay Colony, The Fine Arts Work Center in Provincetown, and the Skowhegan School of Painting and Sculpture. Phil Whitman recently relocated from Brooklyn, NY to Central VT.

Sfumato and Macchiato Pastel Painting

Robert K. Carsten, PSA, CPS

Friday, July 15 & Saturday, July 16

No matter what your subject—landscape, still life figurative etc.—pastel is the perfect medium to create delicate, soft, misty or hazy scenes evocative of a sfumato effect as well as exciting pictures using patches of well-integrated color in a manner similar to the Italian Macchiato painters. Discover, explore, and be delighted by these techniques that create extraordinary effects. Demonstrations, techniques, group critiques. All levels.

Members \$155/Non-Members \$175

Robert Carsten's paintings have garnered top awards at regional and national exhibitions. A popular instructor, he teaches nationally and has juried numerous national art exhibitions. Robert is a regular contributing writer for the *Artist's Magazine* and *The Pastel Journal*.

Collage-A-Thon

Jane Davies

Monday, July 18

9:30AM–5 PM (with 1 hr lunch break)

Collage-a-thon is like a roto-tiller in the garden of your art-making practice. Churn up those ideas, get them out, let them breathe and give life to fresh work. If you are feeling a bit stale, in a rut, creatively

blocked, or just want a day of fun artistic exploration, this workshop is for you! We will start with quick collage exercises, using basic materials such as paper and glue. We'll move into the use of acrylic paint and drawing materials, and then work on small series. Give yourself permission to just create, without judgment, without pausing to decide whether a piece is "good" or "bad", and without trying to finish each piece perfectly. We're going for quantity here, sheer output; this approach lets you break free of limitations, and gets you out of your comfort zone and into new realms of possibility. Bring any papers or paints you would like to use or share, though Jane will be providing plenty for everyone.

Members \$80/Non-Members \$90

See page 9 for information about Jane Davies.



Amy puts finishing touches to her pastel work, created in a recent workshop with Robert Carsten. Credit: SPA

Whole Body Ink Painting

One-Day Intensive

Glen Hutcheson

Tuesday, July 26

9:30AM-4:30 PM

Making expressive, dynamic ink paintings (or any artwork) has a lot to do with attitude. This one-day intensive class will focus on brushwork, tonal modulation and dramatic expression in large-scale work, giving even the greenest hand the confidence to paint powerfully. To show us what we can strive for, we'll start with some images of work by ancient and contemporary masters of style. The bulk of our time will be spent with brush in hand, and we'll aim to make several complete paintings each over the course of the day. Along the way we'll cover basic visual measurement, some psychological and physical tricks of painting, and the beginnings of observational techniques, all building on the gestural skills at the heart of the class. Materials fee: \$20 to SPA by July 22.

Members \$60/Non-Members \$70

See page 7 for information about Glen Hutcheson.

Exploring Pastels

A 3-Day Intensive

Craig Wiltse

Tuesday-Thursday: Aug. 9, 10 & 11

12:30-4:30 PM

Learn the basics about pastels or get better acquainted with your pastels in this workshop. Craig will demonstrate different pastel techniques that will allow you to explore abstract and figurative pastel works. Students will advance their creative process through seeing things differently and developing expression and style. Those with more experience will have the chance

to add to their skills with feedback from Craig. Friendly group discussions at the conclusion of each session will help students understand a variety of approaches to the medium. Beginners and all levels are welcome. Contact SPA for a suggested supply list.

Members \$110/Non-Members \$130

Craig Wiltse is primarily a painter, but has shown a variety of 2 dimensional and 3 dimensional works nationally. He received a Bachelors degree in fine art from Rochester Institute of Technology and a Masters degree in fine art from Johnson State College. He taught art in Northfield, Vermont School District, and now teaches art in Randolph schools.

Plan for Fall!

1-Day Intensive: Figure Sculpture in Clay

Patricia deGorza

Saturday, October 22

9:30-4PM

Students will work in clay from a live model, to find ways of coordinating observation, innovation and personal expression. Call us to reserve your space! Clay for the workshop may be purchased from SPA for \$25.

*Members \$80/Non-Members \$90
(includes model fee)*

Get Inspired!

If you'd like to have one-on-one tutorial sessions on a variety of media, let us know. SPA studio artist Pria Cambio will gently pull the creativity from you. Call us at 479-7069 for more details.

Programs for Youths

Art's First – First 3 Saturdays

Join us at SPA for free art activities for youths on Saturday afternoons. Be sure to call SPA to sign up your child by the Friday before the activity takes place—this helps us plan better. Spaces are limited. SPA will be hosting these afternoon sessions for youths on the first 3 Saturdays of each month. An example of our schedule follows—please call us at 479-7069 or visit SPA's website for more information.

FREE INSPIRATION!

MAY

May 7, 1–3:30 PM Activities for youths ages 7–10 yrs. (Free: call by May 6)

May 14, 1–3:30 PM Activities for youths ages 7–10 yrs. (Free: call by May 13)

May 21, 1–3:30 PM Activities for youths ages 11–13 yrs. (Free: call by May 20)

JUNE

June 4, 1–3:30 PM Activities for youths ages 7–10 yrs. (Free: call by June 3)

June 11, 1–3:30 PM Activities for youths ages 7–10 yrs. (Free: call by June 10)

June 18, 1–3:30 PM Activities for youths ages 11–13 yrs. (Free: call by June 17)

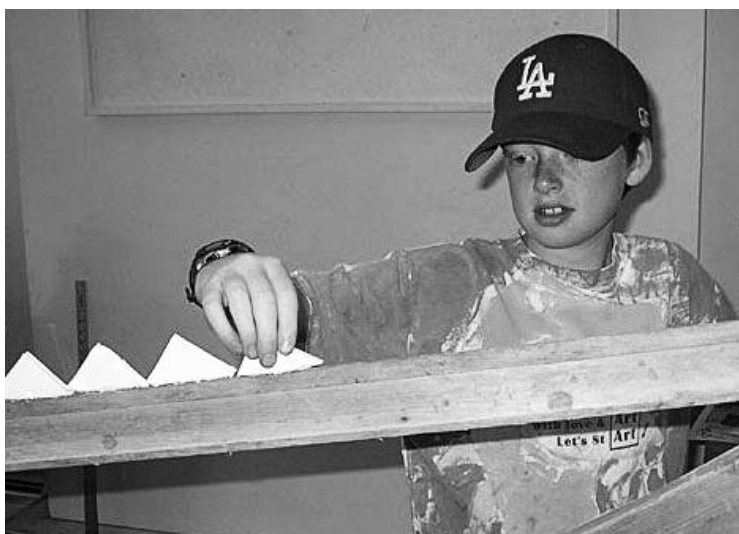
JULY (Slight schedule changes, due to July 4 weekend. Please call for info.)

AUGUST

Aug. 6, 1–3:30 PM Activities for youths ages 7–10 yrs. (Free: call by Aug. 5)

Aug. 13, 1–3:30 PM Activities for youths ages 7–10 yrs. (Free: call by Aug. 12)

Aug. 20, 1–3:30 PM Activities for youths ages 11–13 yrs. (Free: call by Aug. 19)



*Tyler adds a spine to his gigantic dinosaur sculpture.
Credit: SPA*

Carve Your Monogram!

Kerry O. Furlani

Friday, July 29

Noon–4

Mark the entrance of your bedroom with a handmade, stone initial that you've made yourself. Youths aged 11 to 13 will be introduced to historic lettering techniques and will learn how to create letters on stone using hand chisels and mallets. It takes concentration, energy and it's fun! First, you'll sketch your letter and then Kerry will show you how to make it on a small piece of slate. Tools and slate are provided; please bring your own safety glasses. Class size is limited to six students.

\$10 per participant

See page 8 for information about Kerry O. Furlani.

Thank You Very Much!

*We could not have done it
without your help.*

BASH

See page 5 for our amazing supporters and volunteers.

Gallery

Pria Cambio
Darryl Garland
Lori Stroutsos
Janet Van Fleet

Receptions Hosting

Marge Sichel

Art Transport

Mark Waskow

SPA Library

Heather Ritchie

Specialists

Darryl Garland,
Graphic Design
& Website
Jack Rowell,
Photographer
Mark S. Waskow,
SPA Archivist
Andrew Wellman,
Photography
Instruction

Thank You for Your Support

Thank you to the generous supporters of activities at Studio Place Arts
(December 10, 2010 to March 31, 2011).

Palette Partners

Peter Backman & Annie Christopher
National Life Group
Northfield Savings Bank

Art Angels

Anonymous
Claudia & Allen Clark
Coca-Cola Foundation
Marie LePre Grabon & Linda Markin
North Country Federal Credit Union
John & Katherine Paterson
Trow and Holden Co.
Vermont State Employees Credit Union
Jenny Warshaw
Washington Electric Co-op

Supporters

Jonathan and Cathy Cone
Elaine Dufresne & Thomas Peterson
Fischer, Ziegler & Lundberg Orthodontics
Georgia Landau
Margaret and Alban Richey
Vermont Mutual Insurance Group

In Memory of Charles Woodard

Larry Becker & Kate Ross

Major Grants

Anonymous
Estate of Margaret "Margot" J. George
LLH/LHM Foundation
Mark & Carol Hyman Fund

In-Kind Support

The Times Argus

Susan Russell, *continued from front page*

Though preferring her viewing audience to rely on instinctual feelings, and not words, Susan externalized her artistic vision in the following written statement, published in May, 2009:

Creating art to me is a beautiful and profound dance of seeking the invisible truth within. I find that the internal constructs I see, and then bring forth, are sometimes so darn cool and interesting. My internal view excites me and presses me with passion. I go then to the painting process which demands integrity, clarity of intention and consistent hard work. It can be grueling and commanding to approach a blank canvas and lay down what you know. Likewise, it's a process/place that lifts me up and truly carries me to another place of astonishment and fulfillment.

I am perpetually ensconced in seeking divine light and truth in my everyday life. Using paint to express my journey is my chosen process and very satisfying. I love color, form and texture and I use these elements to delineate moments of inner life. It's hard to use descriptive words for my art and I prefer not to try. I do hope though that my images express, communicate and resonate with viewers' inner life and the way beyond. Enjoy.

Enjoy Susan's life work. There will be 2 receptions during the exhibition, the first on Friday, April 29 from 5:30–7:30 PM, and a closing reception will take place on Saturday, June 4, 2:30–4 PM.

Robert Carsten leads a critique session during his pastels workshop. Credit: SPA



Where's the Classes & Workshops Overview?

To find a short version of the SPA class list, please go to [www.studioplacearts] and click at: Learn Art: Classes & Workshops. You'll find our "Schedules at a Glance" summary on the right hand side of your screen.

Register for a Class

We look forward to speaking to you about our classes and workshops—please call us at (802) 479-7069 to register or if you have any questions. SPA classes and workshops require a minimum of 5 students and maximum capacity for classes varies, depending on class site.

- Register for classes **at least one week before** that class is scheduled to start. Your early registration is appreciated—it helps us schedule much more effectively.
- Any material fees are payable to the instructor at the first class unless otherwise noted.

Join us at SPA

Members of SPA receive discounts on classes, workshops, lectures and admissions, and receive invitations to SPA events and our newsletter. In addition, your membership gift helps SPA serve resident community members and visitors with excellent programs in art making, learning, and art exhibition. Please join us in making SPA a wonderful community art center.

Name(s) _____

For children, state both: child's age _____ and the

Parent/guardian's name: _____

Address _____

Town _____ State _____ Zip _____

Phone (Home) _____ (Work) _____

Email* _____

\$20 Student/Senior \$50 Couple \$100-249 Supporter!

\$35 Individual \$75 Family (3-5 people) \$250-999 Art Angel

I would like to donate to the Scholarship Fund in the amount of \$ _____

I am an artist. Notify me of show opportunities by email.*

Mail to: Studio Place Arts
201 North Main Street
Barre, Vermont 05641

*Due to rising postage costs, we appreciate being able to send notifications via email. We will never give out your email address.

Office use: Rec'd.....Dep.....Ck#.....

REGISTRATION FORM

Student's Name _____

For children's classes: Age _____ Parent/guardian name _____

Address _____ Town _____ State _____ Zip _____

Phone (H) _____ (W) _____ Email _____

Title of class/workshop

Member
Tuition

Non-member
Tuition

Note: Materials list, if necessary, will be sent following registration

SUBTOTAL

To apply for scholarship funds, call the office; when approved, subtract scholarship from Subtotal at right. (Limit of two scholarships per person per year)

Scholarship

\$10 per class deduction
for high schoolers

CREDIT CARD PAYMENT VISA MASTERCARD EXPIRATION DATE: ____/____

TOTAL
 Check enclosed

ACCT# _____ Signature _____

Registrations are taken in the order in which they are received. Registrations after the beginning of classes pay full tuition.

REFUND POLICY:

- Cancellations 7 days before first class:
refund for full paid amount minus \$10 registration fee OR 100% credit towards a future class.
- Cancellations that occur within 6 days before the first class:
75% refund minus \$10 registration fee OR 100% credit towards a future class.
- Cancellations after first class, but before second class:
50% refund of paid tuition minus \$10 registration fee OR 100% credit toward future class.

Full refund if SPA cancels. Credits towards future classes must be used within 12 months of date of cancellation.

Tuition is due with registration.

Make checks payable to:

Studio Place Arts

201 North Main Street
Barre, VT 05641

802-479-7069

info@studioplacearts.com

www.studioplacearts.com

For office use only: Rec'dDep.....Ck#.....



Studio Place Arts

(802) 479-7069

201 North Main Street
Barre, Vermont 05641

www.studioplacearts.com

Gallery Hours: Tuesday–Friday 10AM–5PM,



Saturday NOON–4PM

The SPA building is fully accessible.



Find Us on Facebook

[FACEBOOK.COM/STUDIOPPLACEARTS](https://www.facebook.com/studioplacearts)

BOARD OF DIRECTORS

Darryl Garland, Barre

Pria Cambio, Montpelier

Andrew Wellman, W. Berlin

Dashka G. Kurjanowicz, Barre

Lori Stroutsos, Montpelier

Chair

Vice Chair

Treasurer

Sue Higby, Executive Director

shigby@sover.net

Leslie Thomas, Admin. Associate

info@studioplacearts.com



There will be an exhibit of Sam Kerson's linoleum block prints at SPA called, "Ode to Demeter, Persephone entre Deux Mondes" starting June 14. The images were originally drawn as a proposal for a series of performances that took place in France in 2006 and in Finland in 2007.

Your Membership in SPA Keeps the Lights On!

JOIN US AT SPA!

Do you like what we are doing and want to help us to do more? We need new members at SPA—and we need you! Membership dues help to support every aspect of SPA. Your membership gift helps SPA serve community members and visitors with high-quality programs in art making, learning, and exhibition.

Your membership in SPA matters! SPA has no public funding sources, no major endowment, no multi-year grants from large, private foundations, and no contributions from the United Way.

If you have not joined SPA yet—now's the time. If you've been a member in past years, we appreciate this support; however, we truly depend on annual support by community members. We urge you to support our work now.

\$20 Senior/student

\$35 Individual

\$50 Couple

\$75 Family

\$100 Supporter

\$250+ Art Angel



Thank you for your support—see you at SPA!

Change Service Requested

Non-Profit
Postage Paid
Barre, VT
Permit #8